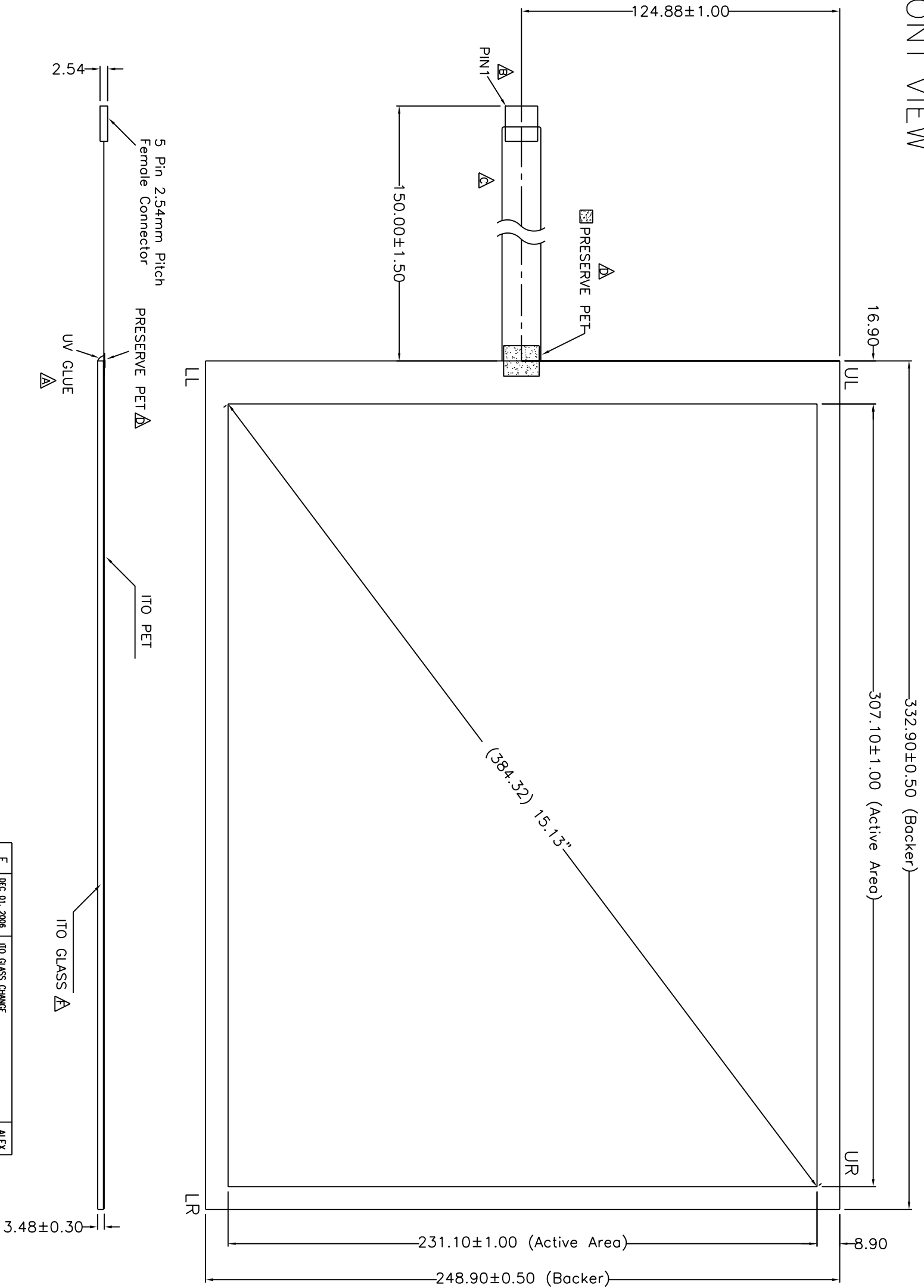


FRONT VIEW



PIN#	DESIGNATION
1	LL
2	UL
3	S
4	LR
5	UR

NOTES:

1. ITO GLASS THICKNESS : 3.18mm
2. OVERALL THICKNESS : 3.48±0.30mm
3. CONNECTOR AND PINOUT AS INDICATED
4. FRONT SURFACE : ANTI-GLARE HARDCOAT
5. LAYER TO LAYER ASSEMBLY TOLERANCE: ±0.50mm
6. TAIL TYPE : IMMERSION GOLD PLATED FPC WITH AMP-C TIN PLATED CONTACTS
7. OTHER SPEC : SEE APPROVAL SHEET



NO.	DATE	REVISION DESCRIPTION	CHK
F	DEC 01, 2006	ITO GLASS CHANGE	ALEX
D	MAY 11, 2006	(PET SIDE) TAIL'S LOCATION INCREASE PRESERVE PET	ALEX
C	SEP 23, 2005	FPC TAIL CHANGE	ALEX
B	MAY 11, 2005	CONDUCTOR GOLD PLATING & PIN OUT MODIFY	ALEX
A	AUG 16, 2004	ADD UV GLUE TO TAIL LOCATION	ALEX

Apex Material Technology Corp.

CHIEF OF DESIGN	APPROVED	PROJECT NUMBER	DATE	REV.	SCALE	UNIT
DAVID	ALEX	2502	DEC 01, 2006	F	1:1	mm

TOLERANCES UNLESS SPECIFIED	PROJECT NAME
.X ± 0.50	2502
.XX ± 0.50	DWG NO : 2502-6-01
.XXX ± 0.30	SCALE: 1:1 UNIT: mm
ANGULAR ± .	